

ELECTRICAL FLAP BOX

**EFLAP**

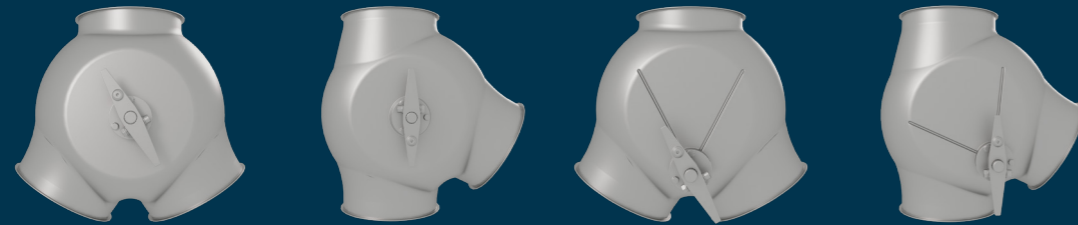


SWISCA AG  
Wührestrasse 14  
9050 Appenzell

+41 71 552 44 00  
info@swisca.com  
www.swisca.com

# EFLAP

Electric flap boxes are used to divert granular and powdery products in free fall. Switching is carried out by an energy-efficient servo drive. EFLAP is made entirely of stainless steel and can be used in barrel construction systems with flanging in all common diameters. Symmetrical and asymmetrical versions, with and without seals, enable a wide range of applications.



Type	Symmetrical	Asymmetrical	Symmetrical with seal	Asymmetrical with seal
Winkel	60°	60°	60°	60°
DN120	X	X		
DN150	X	X	X	X
DN200	X	X	X	X
DN250	X	X	X	X
DN300			X	X

A single connection cable is all that is needed for the electrical installation and control of the servo drive with digital position signals. The integrated control electronics contain the functions for the switching positions so that the electric flap box can be easily connected to the system control without relays. No compressed air is required to operate EFLAP.



## Benefits

- + Simple installation and control integration
- + Robust construction
- + Reliable operation

Integrated control electronics

Energy-efficient servo drive with position signals

Completely stainless construction

