



QUANTITY CONTROLLER

FLOBA



SWISCA AG
Wührestrasse 14
9050 Appenzell

+41 71 552 44 00
info@swisca.com
www.swisca.com

FLOBA

SWISCA's automatic quantity controller FLOBA is used for an optimal composition of grain mixtures and for the regulation of a predetermined capacity. FLOBA's innovative drive and control technology guarantees a high precision and extraordinary reliability of the dosing.

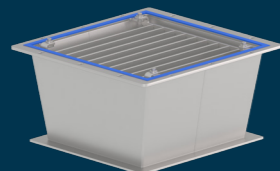
Type	Diameter mm	Height mm	Wheat t/h	Corn t/h
8	120 / 150	455	0.09 – 8	–
16	120 / 150	455	0.18 – 16	0.45 – 16
32	150 / 200	455	0.36 – 32	0.9 – 33
105	200 / 250	455	4.5 – 105	4.5 – 105

The dosing slide equipped with servo technology allows for precise control of the positioning area. Accurate load cells and an exceptionally robust control system with intelligent regulation algorithms ensure precise product measurement. Up to three FLOBA automatic quantity controllers can be controlled with a single touch screen unit called VISCA. An external energy supply monitors the closure of the dosing slide with a servo drive in the event of an interruption of electricity. Thanks to our enhanced protection equipment for abrasive products and high-quality system components, wear and tear is reduced, allowing the machine to achieve maximum operational reliability. The low construction height of this innovative dosing system is also advantageous for customized retrofits.

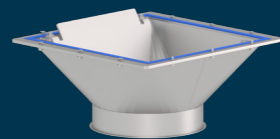
Option



Inlet



Outlet for conveyor elements

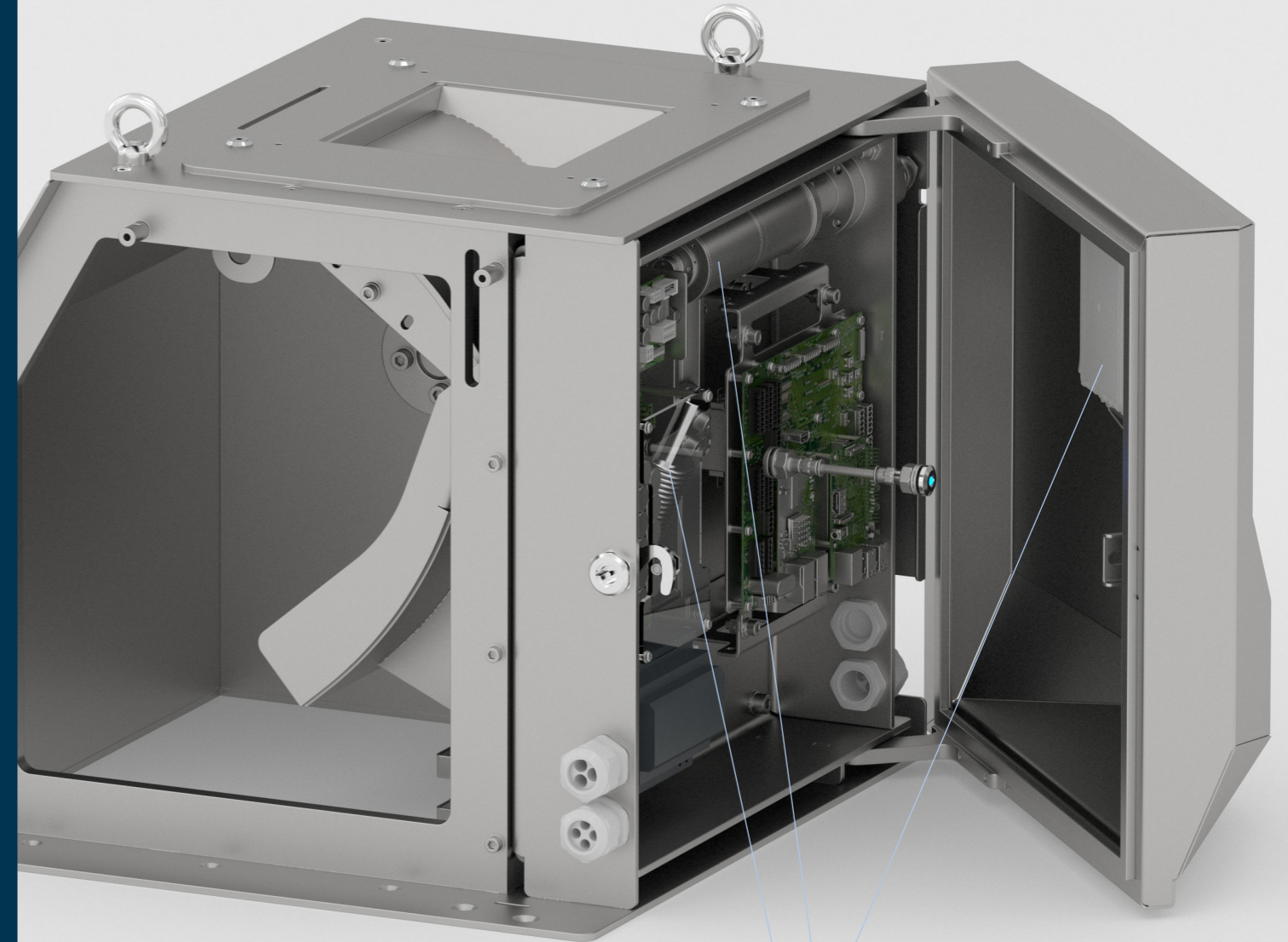


Outlet for pipe construction with wear plate



Benefits

- + Precise and reliable dosing
- + Energy-efficient function
- + Hygienic design



IoT compatible control with intuitive touch operation

Energy-efficient servo drives

Precise load cell

Low-wear, uncoated deflection plate

