

PLANSIFTER  
**SIFTO**



SWISCA AG  
Wührestrasse 14  
9050 Appenzell

+41 71 552 44 00  
info@swisca.com  
www.swisca.com



# OUT OF THE BOX

SIFTO is a fully modular sifter platform designed to accommodate one to eight sieve stacks with integrated direct drives. Individual stroke and speed settings, combined with hexagonal SWISCA screens, significantly increase sifting efficiency. The all-stainless-steel construction and the elimination of sealants and adhesives underscore SIFTO's emphasis on sanitation.

## Benefits

### High sifting performance

- + Speed and stroke adjustable to product
- + Sieve with improved throughput / standard deviation

### Food safe

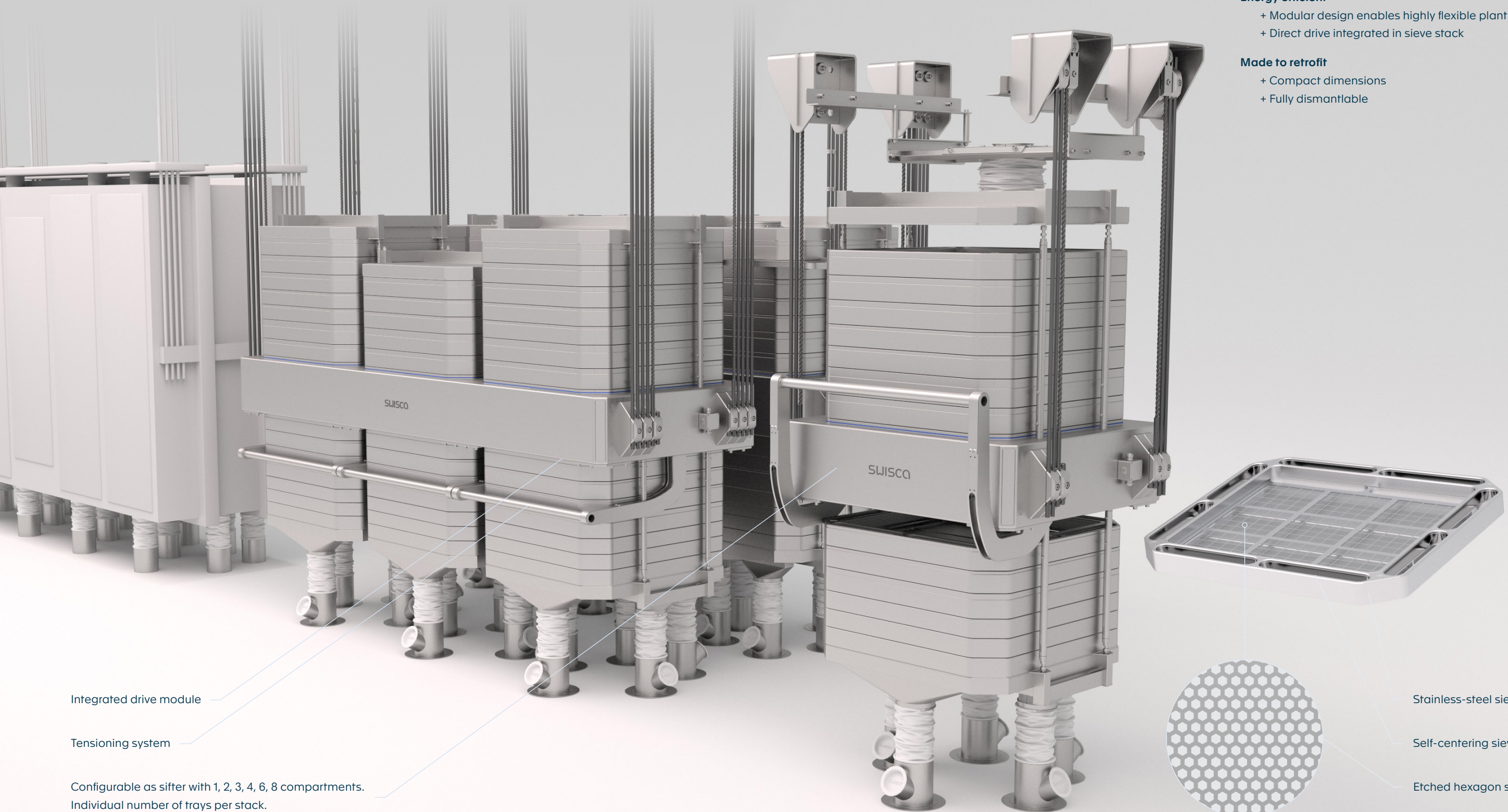
- + No sealants, no adhesives
- + All-stainless construction

### Energy efficient

- + Modular design enables highly flexible plant concepts
- + Direct drive integrated in sieve stack

### Made to retrofit

- + Compact dimensions
- + Fully dismantlable



Stainless-steel sieve and trays

Self-centering sieve trays

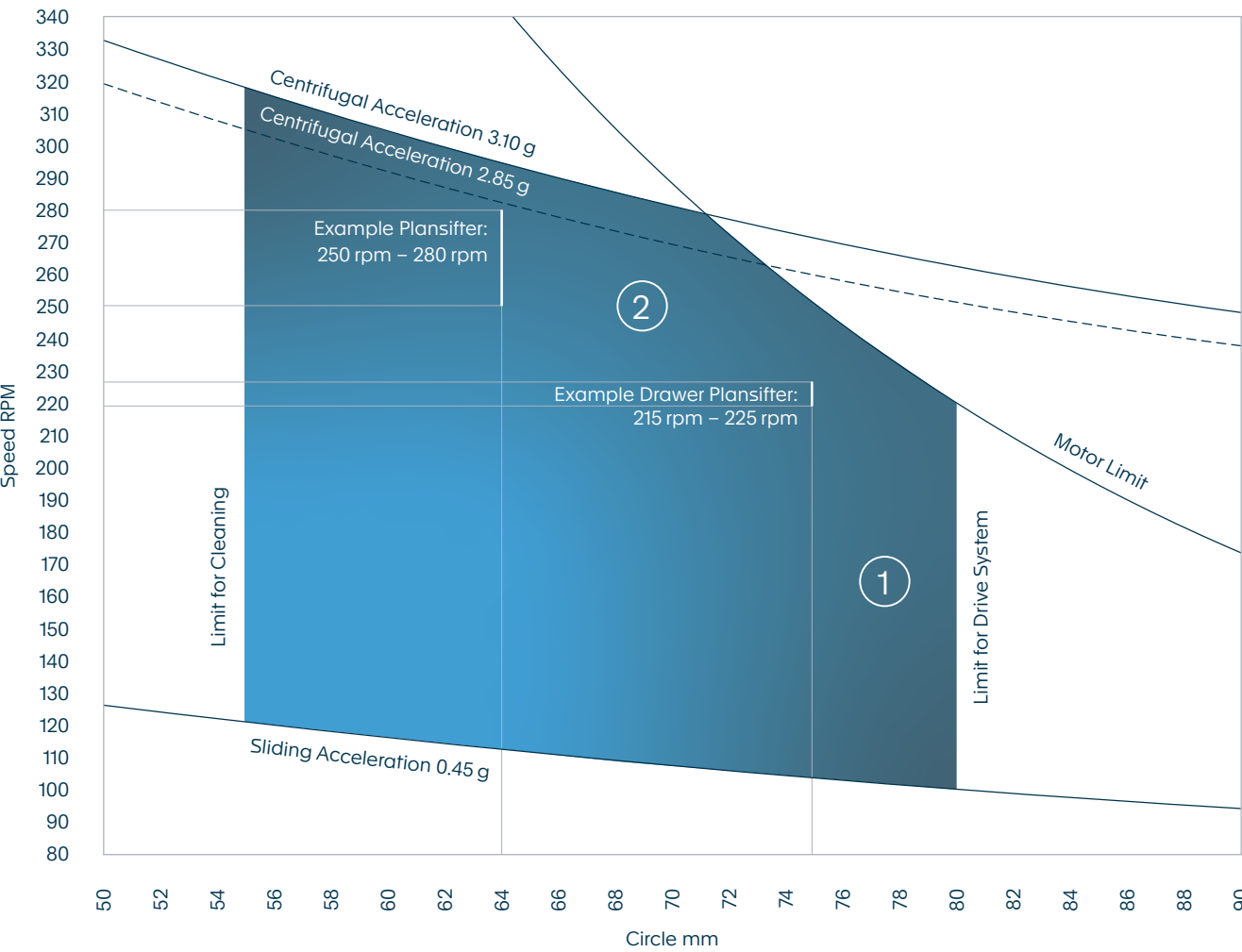
Etched hexagon screens





# DRIVING EFFICIENCY

The direct drive is seamlessly integrated into the form-fitting sieve stack, eliminating the need for a housing. Adjustable flyweights allow for customizable stroke settings, while an energy-efficient servo drive enables variable speed, ensuring that each SIFTO can be optimally tuned to the respective passage.



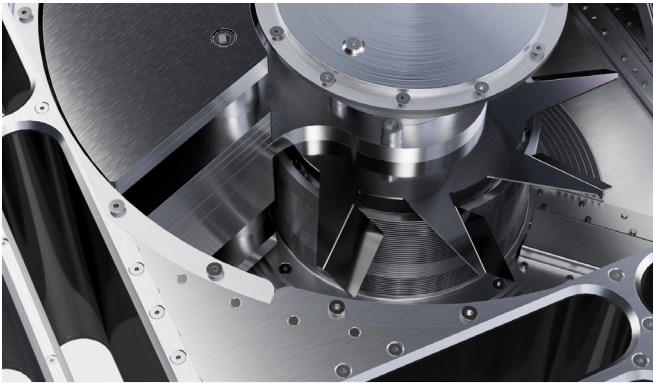
SIFTO's versatility is exemplified by its wide range of speed/throw combinations, facilitated by a large circle from approximately 55 mm to 80 mm and accelerations up to 3.1g:

- 1) Optimum range of low speed and high throw for coarse products
- 2) Optimum range of high speed and low throw for fine products

Balanced load distribution and direct power transmission are key factors in minimizing SIFTO's structural requirements and enabling its compact design.



Harnessing servo technology, SIFTO's direct drive operates efficiently and reliably. Its separate, lifetime-lubricated bearings and the absence of transmission components ensure durability and low maintenance.



A controlled machine stop reduces the swing-out time to a few seconds, further increasing overall system availability.



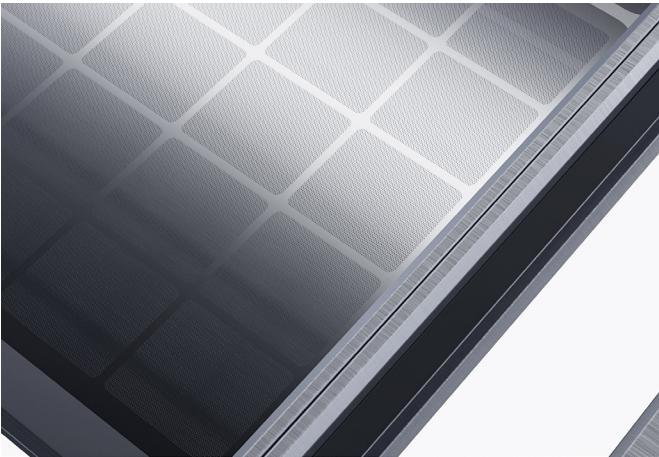
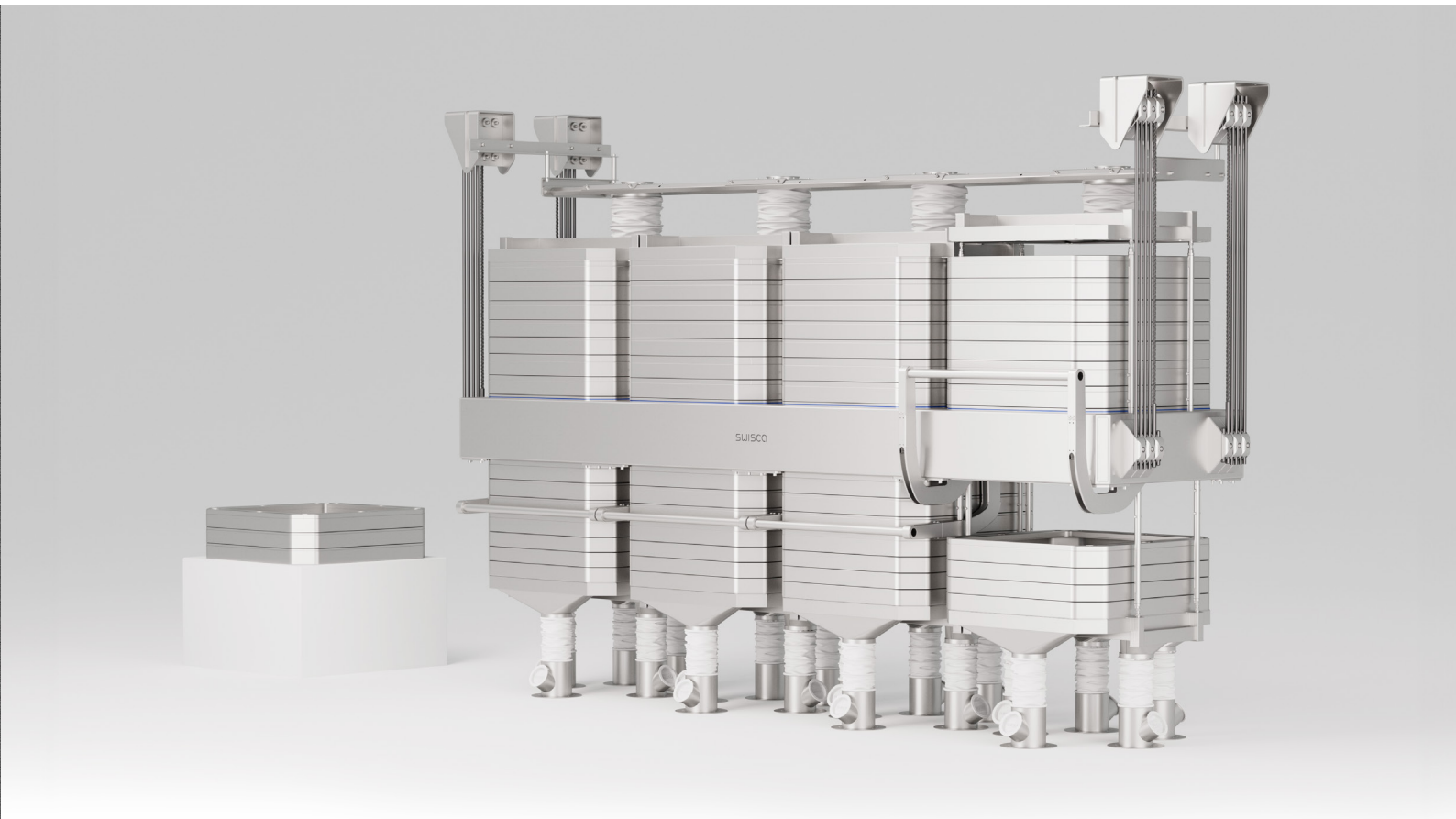


# INSPIRED BY NATURE

The SWISCA screen features hexagonal holes, expanding the open sieve surface by average 4.5 % and increasing product throughput by up to 20 %. Its uniform openings enable precise particle separation, improving standard deviation and product quality.



SIFTO consists of self-centering stackable sieve trays held together by a tensioning mechanism. When opened, both stack halves above and below the drive are easily accessible.



The wear-resistant stainless-steel screen is spot-welded to the insert sheet, eliminating the need for cyanoacrylate adhesives. This improves food safety and significantly extends service life. In addition, its homogeneous material composition facilitates straightforward recycling processes.

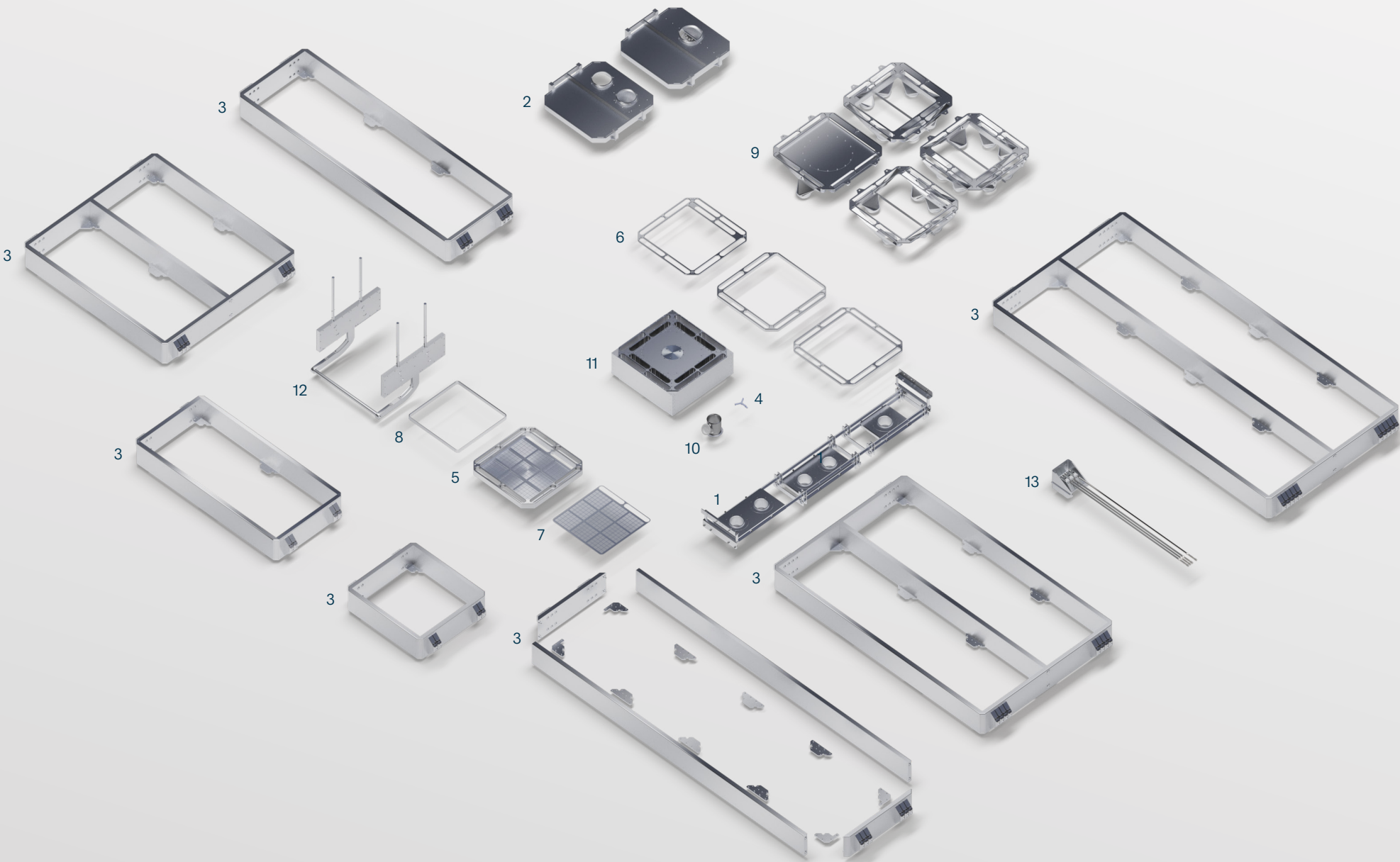


The screens sit low inside the tray, providing ample space for the product. This design not only maximizes capacity, but also seals against the outside without the need for felt or other gasket materials. A wide cross-section for throughs supports product flow, and the all-stainless-steel construction minimizes abrasion.



# MODULAR LIKE BUILDING BLOCKS

The modular platform accommodates a range of sifter configurations from one to eight stacks, featuring a distinctive three-stack unit. The flexibility offered by compact single- and double-row arrangements, paired with a fully dismantlable construction, positions SIFTO as an optimal solution for retrofit applications.



- 1) Inlet module with height-adjustable platforms
- 2) Inlet tray with 1-4 spouts
- 3) Machine frames for SIFTO configurations with 1, 2, 3, 4, 6 and 8 compartments  
Fully separable for effortless transport and installation
- 4) Off-the-shelf screen cleaners with and without bristles
- 5) N (normal) and B (wide) sieve trays
- 6) Intermediate frames for all trays in three different heights
- 7) Screens of 100-1250 microns (equivalent mesh size)
- 8) Retaining frame
- 9) Collecting tray with up to 12 outlet spouts  
Special tray for rebolt-/flour sifter
- 10) Control spout
- 11) Drive module
- 12) Tensioning system
- 13) Suspension, including ceiling mount, fiberglass rods  
Optional safety cable



# TECHNICAL DATA

SIFTO's box-free design allows for individual screen stack heights. Each half of the sieve stack can accommodate 4 to 15 sieve trays. Height differences of up to 320 mm (approx. 4 trays) can be realized in the same sifter. Special double-row arrangements with customized spacers are available on request.

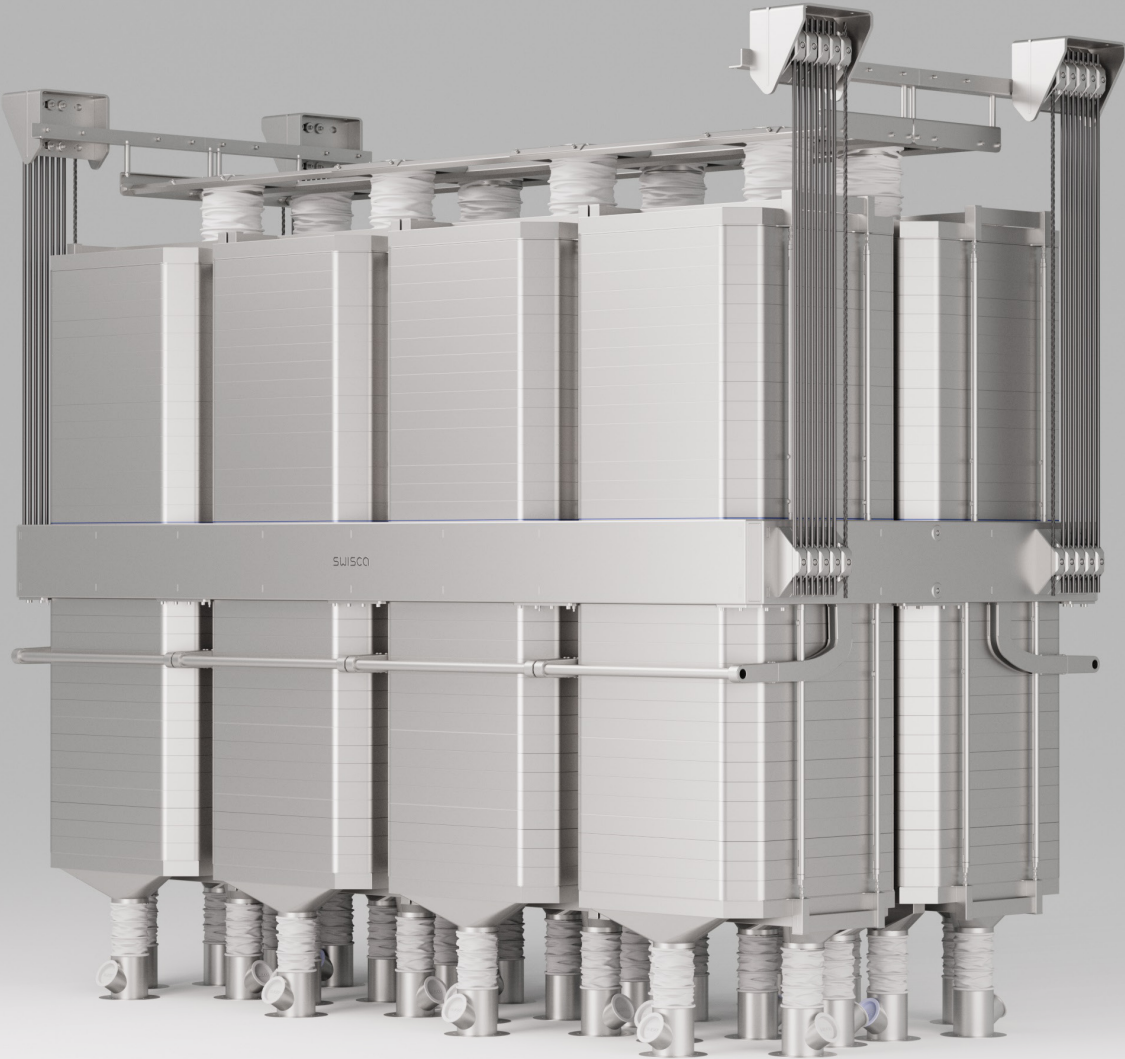


Type	Width W mm	Height H (min)* mm	Height H (max)* mm	Weight (min)* kg	Weight (max)* kg
SIFTO-1×1	1317	300	1095	750	1100
SIFTO-1×2	2332	300	1095	1250	1850
SIFTO-1×3	3347	300	1095	1800	2650
SIFTO-1×4	4362	300	1095	2350	3450
SIFTO-2×1	1317	300	1095	1350	1950
SIFTO-2×2	2332	300	1095	2400	3500
SIFTO-2×3	3347	300	1095	3450	5050
SIFTO-2×4	4362	300	1095	4500	6550

Equipped with an external drive control module and a local junction box with stop/reset functionality, the system includes up to 70 meters of cable, allowing the control cabinet to be placed next to the sifter, in a separate room, or in the control room.



SWISCA's SIFTO paves the way for next-generation mill concepts by making individual sifting passages technically feasible and economically affordable. Additionally, in its maximum configuration with 240 sieve trays, SIFTO offers a space-saving alternative to existing square plansifters with eight or more compartments.



Designed and manufactured in Switzerland.